

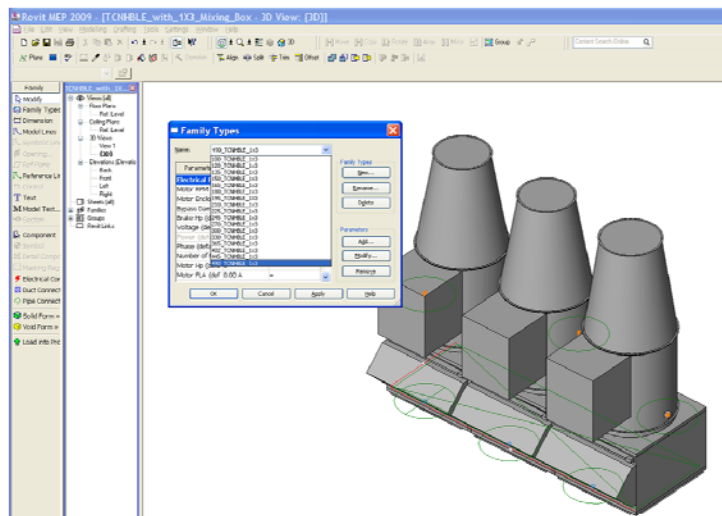


# PERSPPECTIVES

Newsletter

Issue 09-01  
October, 2009

## Revit MEP® 2009



Don't waste your valuable engineering time creating Revit product drawings. Loren Cook Company has done all the work for you !

Loren Cook is proud to offer Autodesk® Revit® families for their fans.

Each 3D parametric family is a full-scale representation of the product for every size and model in the Loren Cook offering. Simply download the individual product family for your project or download the entire library for future use.

### Includes:

- Fully dimensioned drawings for all sizes and models
- All arrangements and configurations available
- Duct connection size
- Electrical connection location
- Mounting holes (where applicable)
- User defined attributes for airflow, static pressure, RPM, horsepower, voltage, phase, etc.



Revit files are available for download at <http://www.lorencook.com/About/destools.shtml>

You will be asked to create an account and select a password. Within seconds you will be sent a confirmation email with an access code. The first time you log on you will need to enter username, password and access code. After that you will no longer need the access code

57 Ash Circle \* Warminster, PA 18974 \* Tel: (215) 354-9070 \* Fax: (215) 354-9072 \* [www.EliteAirSys.com](http://www.EliteAirSys.com)

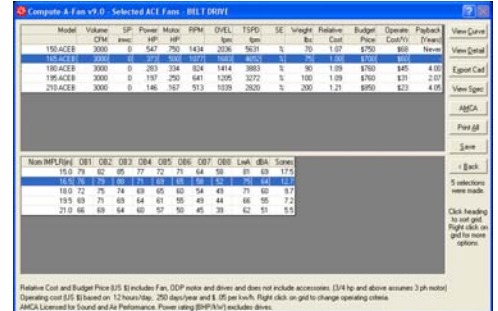


## Additional Design Tools by Loren Cook

### **COMPUTE-A-FAN® v9.0 :**

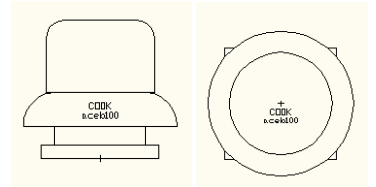
Compute-A-Fan is a fast, accurate and easy to use fan selection program. This tool gives point and click access to Cook's entire line of fans, blowers, gravity ventilators and energy recovery ventilators. Simply select a fan model, enter air flow and pressure in either English or metric units and all possible fans are displayed. The Tools Menu includes these proven timesavers:

- Fan Law Calculator
- Duct Designer
- Psychometric Calculator
- English-Metric Converter
- Sound Converter
- Annual Energy Cost Estimator
- Budget Pricing



### **FAN-DRAFTER® v3.0:**

Fan-Drafter is a CAD template package that can insert accurate, scaled, \*.dwg depictions of our products into architectural drawings. Nearly 5,000 drawings, representing plan and elevation views of every Cook model, size and configuration are included. When Fan-Drafter is accessed with AutoCAD Release 2000 (or higher) a customized menu system is available.



### **ENGINEERING COOKBOOK**

The Engineering Cookbook is a convenient pocket reference guide for mechanical designers. It provides "fingertip" access to frequently needed information, including:



- System Design Guidelines
- Mechanical Equipment Standards
- Heating and Cooling Load Estimating
- Sound and Vibration Guidelines
- System Trouble Shooting Guidelines
- Ventilation Rates for Indoor Air Quality
- Design Formulas and Conversion Factors
- Rules of Thumb

This free 100 page guide is available in printed form (Call us for your copy) or downloadable in PDF format in the online version.

### **FAN LAW CALCULATOR & DUCT DESIGNER**

This handy, two-in-one design tool furnishes fast, accurate, and practical information.

- On one side : a Fan Law Calculator that displays cfm, rpm, static pressure, and horse power. Input any one measurement and all four are calculated.
- On the other side: A Duct Designer that selects the proper duct size when capacity, velocity, and friction loss are entered.



Call us at Elite Air Systems to get one for yourself.

<input type="checkbox"/> Do not want to receive any more newsletters	<input type="checkbox"/> I would like to receive literature / software about:
<input type="checkbox"/> I would like a sales person to visit me.	_____
	_____
	_____

Name \_\_\_\_\_

Company \_\_\_\_\_

Phone \_\_\_\_\_

Fax \_\_\_\_\_

E-mail \_\_\_\_\_

Complete form and fax to (215) 354-9072