



PERSPECTIVES

Newsletter

Issue 10-03

April 2010

We Don't Need No Stinkin' Flanges !

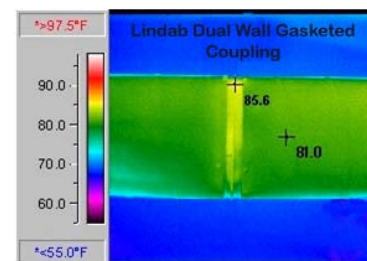
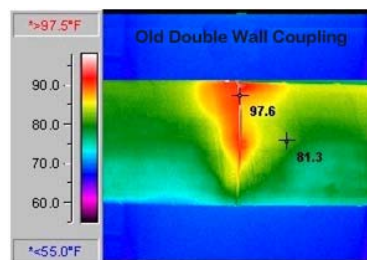


- Do you want to reduce installation time?
- Do you want to reduce labor costs?
- Do you want a better looking installation?
- Do you want a guaranteed leakage classification?

If you answered yes to any of these questions, then the only solution is LINDAB Safe!

Lindab Double Wall Spiral Features and Benefits.

- Guaranteed duct air leakage performance—Lindab warrants a minimum of Class 3 leakage as defined by ASHRAE and SMACNA for 10 years.
- Increased thermal insulation at couplings over traditional double wall due to stringent production tolerances.
- Installs as quickly and easily as single wall duct. (Traditional non-gasketed duct usually requires 1.5 to 2 times more labor than single wall)
- Eliminates the need for costly and unattractive flanged connections
- Slip fit without aligning inner liners
- Fiber retention system
- Foam insulation stop
- Perforated or solid inner liner
- Available in 1 inch and 2 inch insulation thickness



57 Ash Circle * Warminster, PA 18974 * Tel: (215) 354-9070 * Fax: (215) 354-9072 * www.EliteAirSys.com



Other Lindab Product Offerings



RGS registers can be factory mounted for a clean, attractive installation without the need for unsightly grill boxes.



DRLAA series supply drum grilles and registers are recommended for applications requiring large volumes of air. Throw pattern and lengths are highly adjustable.



The SLGU silencer is a straight through silencer with no obstructions to the air flow. It is available with 4" and 6" thick insulation.



The SLBGU Silencer utilizes a center baffle to provide additional attenuation. It is available with 4" thick insulation



The BSLGU elbow silencer is developed for use in duct systems where space considerations or other circumstances prevent the use of straight silencers,

Lindab ®	<h2 style="margin: 0;">Available Materials</h2>							
	G60 (standard)	G90	S304L-2B	S316L-2B	Coated	Agion	Aluminum	Steel
DUCT								
Single Wall: Round / Flat Oval								
Spiral	standard	•	•	•	•	•	•	•
Longitudinal seam (welded)	•	•	•	•	•	•	•	•
Double Wall: Round / Flat Oval - ID								
Spiral (solid)	•	•	•	•	•	•	•	•
Spiral (perforated)	standard							
Longitudinal seam (solid)	•	•	•	•	•	•	•	•
Double Wall: Round / Flat Oval - OD								
Spiral	standard	•	•	•	•	•	•	•
Longitudinal seam (welded)	standard	•	•	•	•	•	•	•
FITTINGS								
Single Wall Round								
Gasketed (SAFE)	•	•	•	•	•	•	•	•
Ungasketed (VENT)	standard	•	•	•	•	•	•	•
Double Wall Round - ID								
Solid	standard	•	•	•	•	•	•	•
Perforated	•							
Double Wall Round - OD								
Gasketed (SAFE)	•	•	•	•	•	•	•	•
Ungasketed (VENT)	standard	•	•	•	•	•	•	•
Single Wall Flat-oval	standard	•	•	•	•	•	•	•
Double Wall Flat Oval - ID								
Solid	•	•	•	•	•	•	•	•
Spiral (perforated)	standard							
Double Wall Flat Oval - OD								
Solid (Double Slip Fit)	standard	•	•	•	•	•	•	•

<input type="checkbox"/> Do not want to receive any more newsletters	<input type="checkbox"/> I would like to receive literature / software about: <hr/> <hr/> <hr/>	Name <hr/> Company <hr/> Phone <hr/> Fax <hr/> E-mail <hr/>
<input type="checkbox"/> I would like a sales person to visit me.		
Complete form and fax to (215) 354-9072		